

STAINLESS STEEL HARDWARE

FOR COMMERCIAL REFRIGERATION APPLICATIONS



KASON®

It's Better with Kason.

Stainless Steel Provides Your Products Long Lasting Value

When you choose Kason, you choose the best hardware in the industry. Our commitment to craftsmanship, durability, and value is second to none.

Kason Stainless-Steel products improve the quality and performance of your equipment for years to come. Demand the best – demand genuine Kason products.

Durability

Stainless steel is highly impact and chemical resistant due to a thin layer of chromium alloy that protects the metals under it. When scratched or dinged the chromium acts as a filler that essentially repairs itself and prevents the ability for rust to form.

Corrosion Resistant

A thin layer of Chromium alloy gives Stainless Steel its corrosion resistant qualities. Higher alloyed grades can resist corrosion in most acids, alkaline solutions, and chlorine bearing environments making their use in commercial foodservice, hospitals and harsh environment applications a priority.

Aesthetics

The bright, easily maintained surface of stainless steel provides a modern and attractive appearance.

Long-Term Value

When total life cycle costs are considered along with the savings of being a low-maintenance product, stainless steel is the least expensive material option.

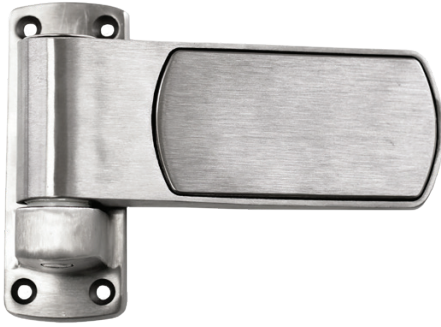
Hygienic Surface

The surface properties of stainless steel makes it difficult for bacteria to adhere and survive. It is easy to clean and can withstand harsh chemicals which makes it an outstanding choice for the strict hygiene requirements found in kitchens, food processing plants and hospitals.

Recyclable

Stainless steel is 100% recyclable. Approximately 50% of new stainless steel comes from recycled stainless steel.

1346S Stainless Steel Adjustable Hinge



- 316 stainless steel strap and flange
- Strap adjusts horizontally, providing door lift and rotation to compensate for sag over time
- Built-in spring action is standard
- Time-tested cam-rise technology assists closing and reduces gasket wear, even with uneven floors. 1346S has 40% more rise than traditional on-rise hinges to magnify the benefit
- Left and right hand hinges use the same component parts for faster mounting and replacement
- Performer 1346S meets NSF/ANSI Standard 2 for food equipment components
- U.S. Patent Nos: D719,809; 7,945,996; 8,800,109; 9,140,045; 9,146,574; 9,493,973; 7,870,642; 7,584,523

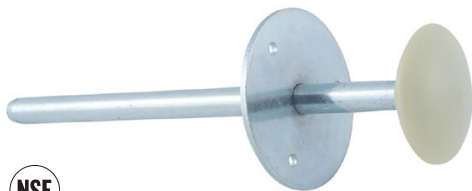
0488C Stainless Steel and Aluminum Push Bar Inside Release

Also Available: 0488L UL 305 Certified version for generator rooms and acoustic chambers



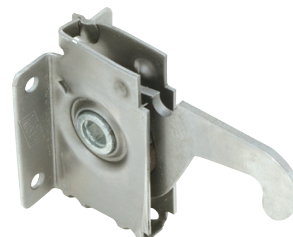
- 304 stainless steel cross bar and mounting brackets
- 303 series stainless steel push rod
- Aluminum pivot covers
- Large hands-free contact area to open door, and provides simple low-effort operation
- Accommodates left and right handed doors
- Temperature range: -40°F to 150°F (-40°C to 65°C)
- Works with Kason latch models 0058, 0077, 0078, and 0778
- Accommodates 3", 4", and 5" door thicknesses
- Retrofit kit available

0481SC Stainless Steel Inside Release



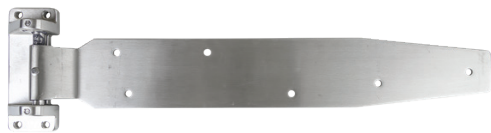
- 304 stainless steel rod and flange
- Opens padlocked or cylinder locked 0778 latch from inside of walk-in
- Clearly visible Safety-Glow knob for added safety

1156 Stainless Steel Panelock™ Locking Points



- 300 series stainless steel
- Typical application for tongue and groove rails where fasteners are nailed or stapled to rails
- Housing designed to resist spreading in high density foam rails under heavy loading

1377L / 1377S Stainless Steel Self-Closing Hinges



1377L



1377S

- 316 stainless steel strap and flange, satin finish
- Precision-machined 316 stainless steel cams gently raise and lower large doors
- Self-closing, cam-rise hinge is extra rugged for challenging applications
- Cam action assures effortless opening and less gasket wear
- Strap reverses for right or left-opening door without disassembly
- No dwell

1341 Stainless Steel Double Knuckle Hinge



- 316 series stainless steel with stainless pin and nylon bearings
- Classic Kason design in high strength polished stainless steel
- Engineered to accept extreme stress and resist door sag
- Ultimate hinge for use in process plants, harsh outdoor weather and caustic environments
- Order right-hand and left-hand separately
- Double throughst washers provide smoothest operation
- Non-rising
- ® U.S. Trademark 2,277,203

1094 SureClose™ Stainless Steel Hydraulic Door Closers



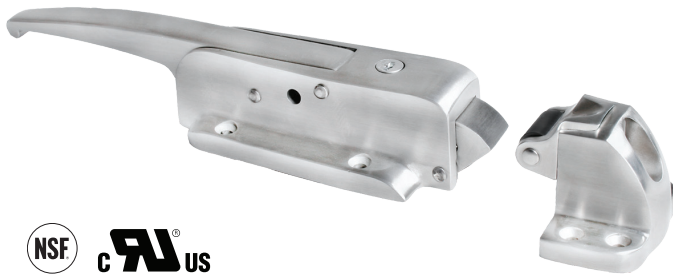
- 300 series stainless steel housing and hook, satin finish
- Powerful gas-loaded hydraulic cylinder guarantees controlled closure
- Solid stainless steel enclosed housing and bend-resistant hook assure long wear in heavy use, with extreme corrosion resistance
- Extra-wide hook ensures roller pick-up and overcomes alignment problems
- Mounting slots on hook allow for easy adjustment to compensate for door sag, keeping roller aligned with hook for proper function
- Life-cycle tested to operate reliably even after a half-million closures
- ® U.S. Trademark 3,212,100; 5,809,887

1229S Cylinder Locking Handle



- Rugged, sanitary 316 stainless steel handle for use on walk-in coolers/freezers
- Both locking and non-locking model available in satin finish
- Cylinder locking model uses a 0948 Inside Release for emergency egress (including freezer kit)
- Can be locked and unlocked from inside the enclosure
- System functions regardless of door sag

0778 Stainless Steel SafeGuard® Latch/0779 Roller Strike



- 316 stainless steel body, handle, and strike housing, satin finish
- Radial tongue makes for effortless door closure when combined with Kason door closers
- The walk-in latch unsurpassed for reliability is now available for the most challenging applications
- 0778 features unequalled strength and corrosion-resistance
- Tamper-resistant locking mechanism and mounting are built-in
- Adjustable roller strike assures precise adjustment
- Padlocking provision standard on all models
- Accepts Kason inside release lever to prevent accidental entrapment in locked walk-ins. Inside lever releases cylinder locked or padlocked door
- ® U.S. Trademark 5,760,311; 5,809,888
- U.S. Patent No. D-649,861

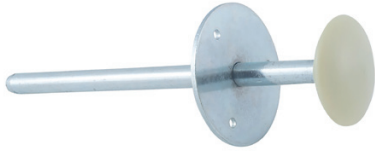
1095 Stainless Steel Spring Action Door Closer



- 300 series stainless steel housing and hook, satin finish
- Operates by direct force adding to natural swing momentum of closing door
- Designed to overcome slowing action of gaskets and air pressure
- Provides fast, full closure for heavy walk-in doors
- Easy installation; simply snaps onto concealed mounting plate
- Simple spring mechanism gives long, trouble-free life
- Stainless steel housing and bend-resistant hook assure long wear in heavy use
- Polymer roller ensures quiet operation
- Ideal complement for Kason Walk-in door hardware to provide self-closing doors
- ® U.S. Trademark 4,906,918

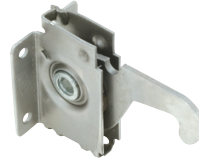
Ordering Guide

0481SC Stainless Steel Inside Release



Part No.	Description
10481SC0400	Inside Release for 4" (102 mm) Thick Door
10481SC0600	Inside Release for 6" (152 mm) Thick Door

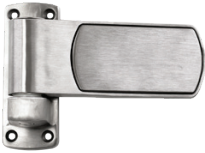
1156 Stainless Steel Panelock™ Locking Points



Part No.	Description
71156ASTN02	Stainless Steel Locking Point, short hook
71156BSTN02*	Stainless Steel Locking Point, long hook

* Same as 1156A except with 3/8" (9.5 mm) additional hook reach; for use with butt joint panels or thick rails.

1346S Stainless Steel Adjustable Hinge



Part No.	Description	Strap Length	Finish
11346S00015	Flush Stainless Steel Hinge, Stainless Steel Cover	7-5/16" (185.7 mm)	Satin
11346S00005	Flush Stainless Steel Hinge, Black Diamond Cover	7-5/16" (185.7 mm)	Satin
91346001040095	Stainless Steel Adjustment Bracket and Screw		

1377L / 1377S Stainless Steel Self-Closing Hinges



Part No.	Description	Offset	Strap Length
11377L00004	Reversible Cam Lift Hinge-Long	Flush (0 mm)	
11377L00008	Reversible Cam Lift Hinge-Long	1-1/8" (28.6 mm)	
11377L00010	Reversible Cam Lift Hinge-Long	1-1/4" (31.8 mm)	
11377L00012	Reversible Cam Lift Hinge-Long	1-3/8" (34.9 mm)	26" (685.8 mm)
11377L00014	Reversible Cam Lift Hinge-Long	1-1/2" (38.1 mm)	
11377L00016	Reversible Cam Lift Hinge-Long	1-5/8" (41.3 mm)	
11377L00018	Reversible Cam Lift Hinge-Long	1-3/4" (44.5 mm)	
11377S00004	Reversible Cam Lift Hinge	Flush (0 mm)	
11377S00008	Reversible Cam Lift Hinge	1-1/8" (28.6 mm)	
11377S00010	Reversible Cam Lift Hinge	1-1/4" (31.8 mm)	
11377S00012	Reversible Cam Lift Hinge	1-3/8" (34.9 mm)	11-5/8" (293.7 mm)
11377S00014	Reversible Cam Lift Hinge	1-1/2" (38.1 mm)	
11377S00016	Reversible Cam Lift Hinge	1-5/8" (41.3 mm)	
11377S00018	Reversible Cam Lift Hinge	1-3/4" (44.5 mm)	

1341 Stainless Steel Double Knuckle Hinge



Part No.	Description	Strap Length	Finish
11341000005	Flush, L.H.	9" (228.6 mm)	Satin
11341000006	Flush, R.H.	9" (228.6 mm)	Satin

Ordering Guide

1094 SureClose™ Stainless Steel Hydraulic Door Closers



Part No.	Description	Offset
11094000093	Stainless Steel Closer, Concealed Mounting	
11094000926	Adjustable Stainless Steel Wide Hook	Flush to 3/4" (0.0 to 19.1 mm)
11094000927	Adjustable Stainless Steel Wide Hook	7/8" to 1-5/8" (22.2 to 41.3 mm)

1095 Stainless Steel Spring Action Door Closer



Part No.	Description	Offset
11095000093	Stainless Steel Closer, Concealed Mounting	
11094000926	Adjustable Stainless Steel Wide Hook	Flush to 3/4" (0.0 to 19.1 mm)
11094000927	Adjustable Stainless Steel Wide Hook	7/8" to 1-5/8" (22.2 to 41.3 mm)

0778 Stainless Steel SafeGuard® Latch/0779 Roller Strike



Part No.	Description	Offset	Finish
10778006102	Strike, Stainless Steel Roller	-1/8" to 3/4" (-3 to 19 mm)	
10778006103	Strike, Stainless Steel Roller	3/4" to 1-5/8" (19 to 41 mm)	
10778006104	Strike, Stainless Steel Roller	1-5/8" to 2-1/2" (41 to 64 mm)	
10779006002	Strike Assembly, Nylon Roller	1/8" to 3/4" (3.2 to 19 mm)	Satin
10779006003	Strike Assembly, Nylon Roller	3/4" to 1-5/8" (19 to 41 mm)	Satin
10779006102	Strike Assembly, Stainless Steel Roller	1/8" to 3/4" (3.2 to 19 mm)	Satin
10779006103	Strike Assembly, Stainless Steel Roller	3/4" to 1-5/8" (19 to 41 mm)	Satin

0488 Series Stainless Steel/Aluminum Push Bar Inside Release



Part No.	Description	Latches
10488C00318300	Cross Bar Inside Release, 3" Door	0058, 0077, 0078, 0778
10488C00318400	Cross Bar Inside Release, 4" Door	0058, 0077, 0078, 0778
10488C00318500	Cross Bar Inside Release, 5" Door	0058, 0077, 0078, 0778
10488C00318600	Cross Bar Inside Release, 6" Door	0058, 0077, 0078, 0778
10488A00318400	Cross Bar Inside Release, 4" Door	0056, 5656
10488AG0317400	Cross Bar Inside Release, 4" Door	5688
10488AG0318400	Cross Bar Inside Release, 4" Door	5688
10488AG0319400	Cross Bar Inside Release, 4" Door	5688

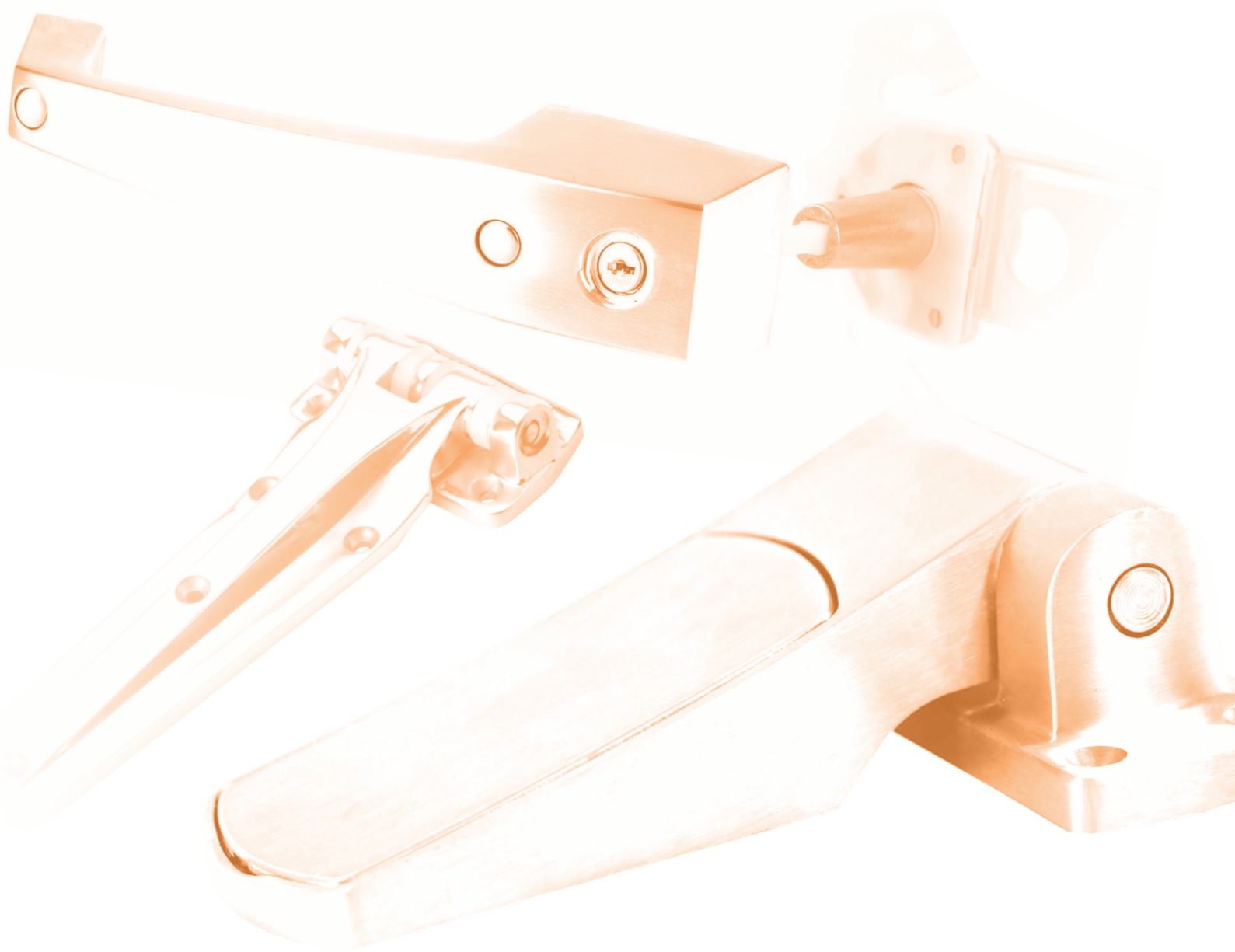
* See kasonind.com for 0488L (UL305) version for generator rooms and acoustic chambers, and Retrofit Kit info

1229S Cylinder Locking Handle



Part No.	Description	Finish
11229S00004	Non-Locking Pull Handle	Satin
11229SC0024XX	Cylinder Locking Pull Handle with 0948 Inside Release for 4" Door	Satin
90948001150117	6" Door Rod	

Cylinder locks may be keyed alike or differently; 5 Key changes available; please specify.



Corporate Headquarters

57 Amlajack Blvd
Newnan, GA 30265
800.935.2766
Info@kasonind.com

Kason Vinyl Division

31 Amlajack Blvd
Newnan, GA 30265
800.472.7450
vinyl@kasonind.com

Kason Central

8889 Whitney Drive
Lewis Center, Ohio 43035
740.549.2100
Central@kasonind.com

Kason Canada

226 Industrial Pkwy. N., Unit 2
Aurora, Ontario
Canada L4G 4C3
905.713.6515
Canada@kasonind.com

Kason Foodservice Division

31 Amlajack Blvd
Newnan, GA 30265
866.231.2157
fssales@kasonind.com

Kason Western

1500 E. Wooley Road
Oxnard, California 93030
805.247.1088
Western@kasonind.com

Kason Mid-America

1239 Atlantic Street
N. Kansas City, Missouri 64116
816.472.7450
MidAmerica@kasonind.com

Oxford Hardware

Burland House, Oxhill CV35 ORD,
United Kingdom
+44 01295 680068
sales@oxfordhardware.co.uk
oxfordhardware.co.uk

International Sales

770.304.3000
International@kasonind.com



It's Better with Kason.

kasonind.com | 1.800.935.2766