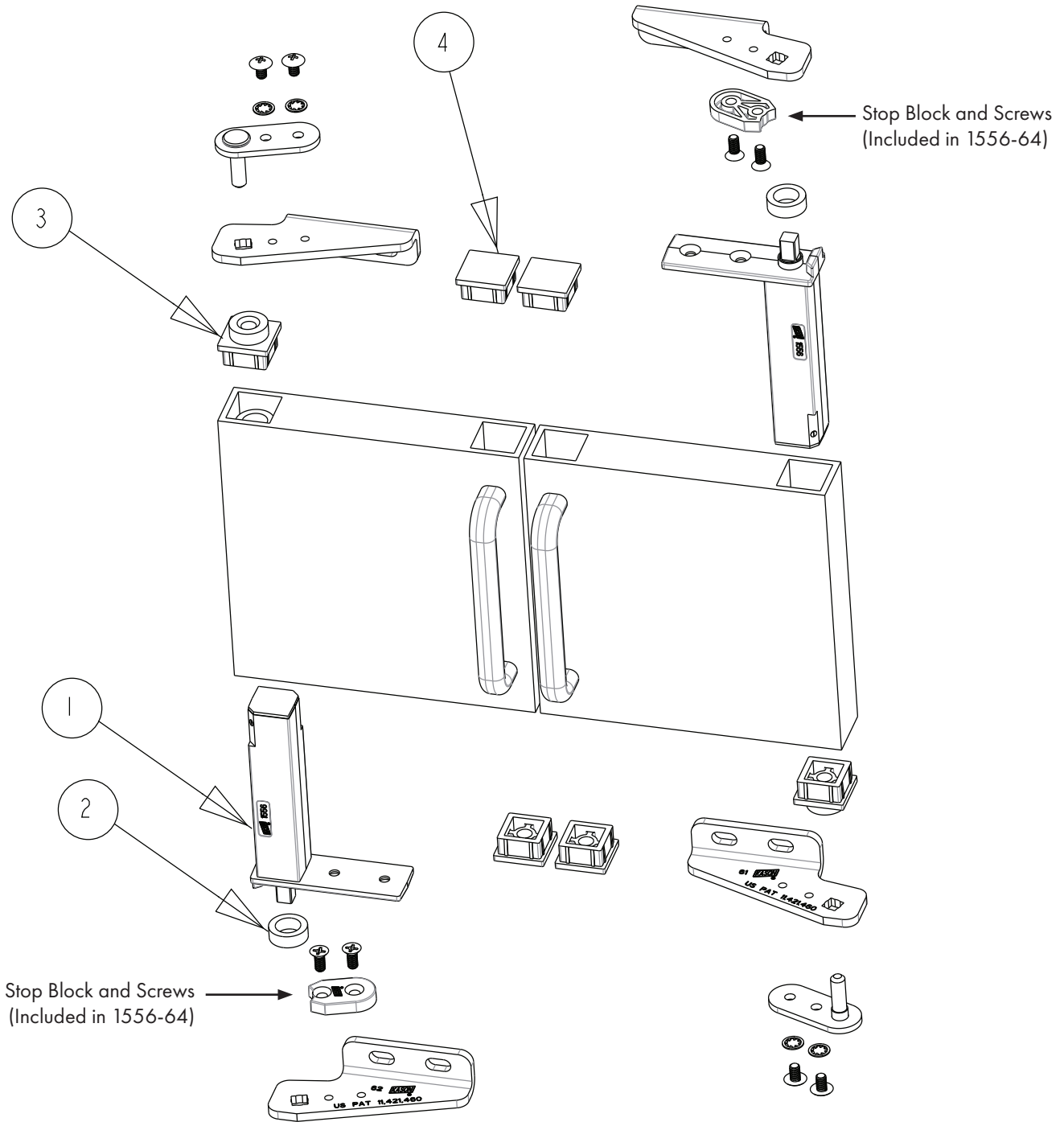


1556-60 Universal Hinge Brackets

Part Number: 11556*



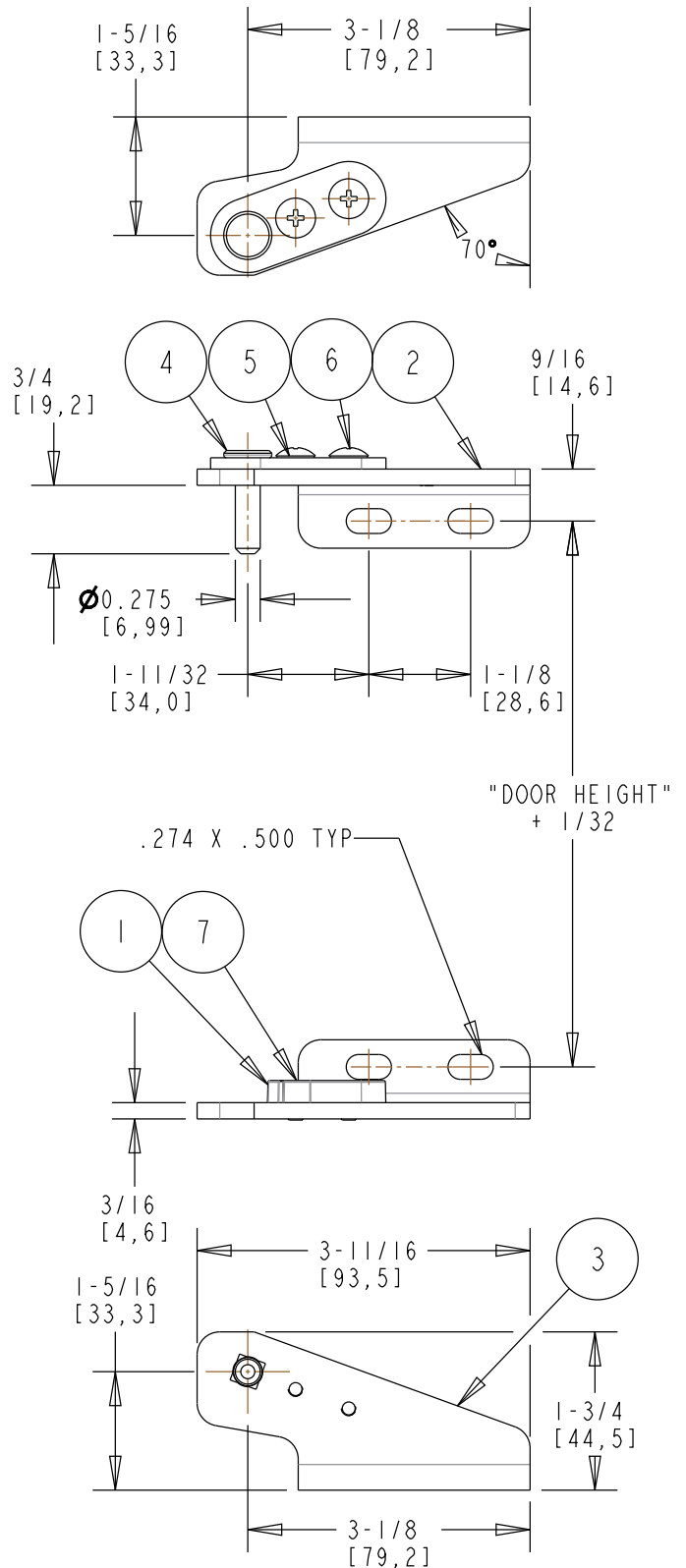
Ref.	*Part No.	Description	Qty./Carton
1	1556-313	Chrome Assembly, 90 Degree Stop, No End Tap, Heavy Spring for Universal Kit	1
2†	1556-258-117	Washer	1
3†	1556-440-117	Bearing High	1
4†	1556-443-117	Plug	2

†Parts included in 1556-313/314 Cartridges

1556-60 Universal Hinge Brackets

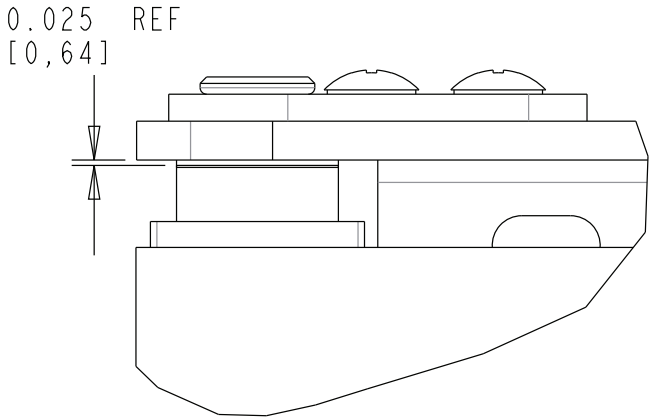
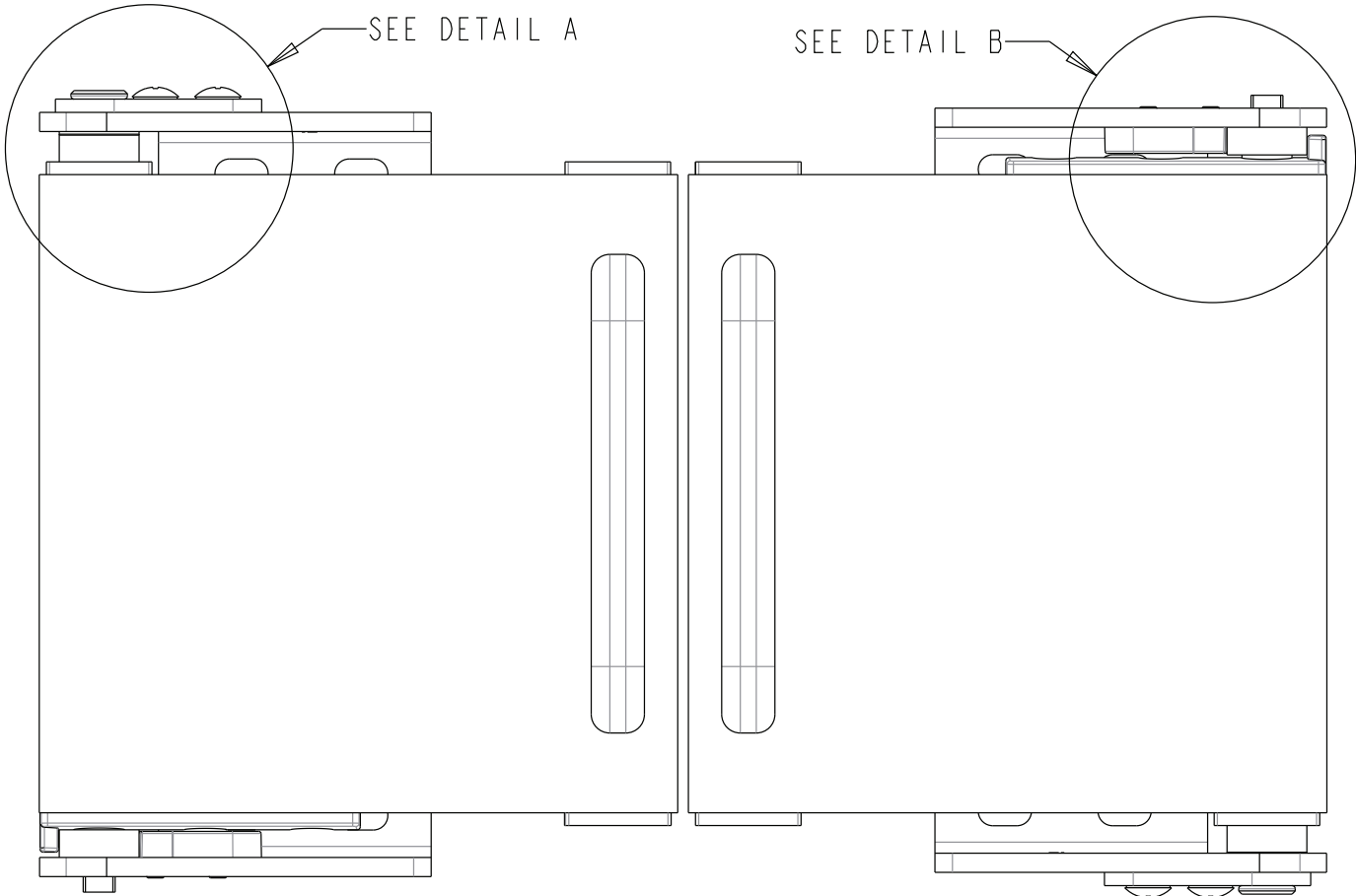
Part Number: 11556*

Ref.	*Part No.	Description	Qty./ Carton
1°	1556-303-117	Stop Block	1
2†	1556-61	Flange, No Stop, Ambidextrous, Chrome	1
3†	1556-62	Flange, No Stop, Ambidextrous, Chrome	1
4†	1556-63	Adapter Assembly	1
5†	20153230110025	Heavy-duty Internal Lockwasher	2
6†	2001419F110312	Screw #10-32 x 5/16 Thread, Phillips, Machine Screw, Steel Zinc Plated	2
7°	2001719F110437	Screw #10-32 x 7/16 Flat Head, Phillips, Steel Zinc Plated	2
°Parts included in 1556-64			
†Parts included in 1556-60			

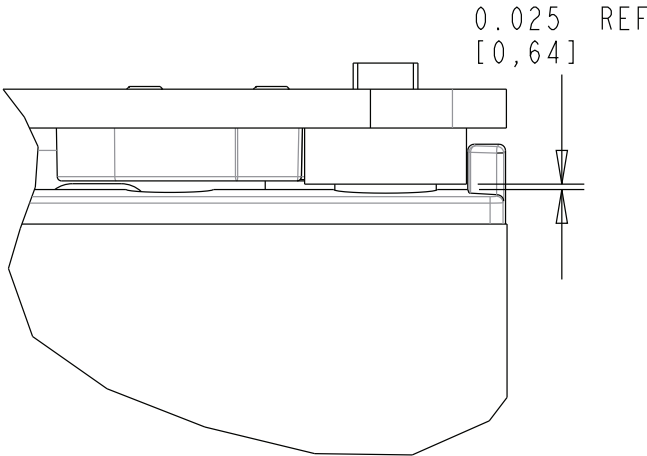


1556-60 Universal Hinge Brackets

Part Number: 11556*



DETAIL A



DETAIL B